

## ENGINEERING MANDATORY DISCLOSURE

Mandatory disclosure by Institutions running AICTE approved Engineering/ Technology programmes to be included in their respective Information Brochure, displayed on their website and to be submitted to AICTE every year latest by 30<sup>th</sup> April together with its URL

The following information is to be given in the Information Brochure besides being hosted on the Institution's official Website.

*"The information has been provided by the concerned institution and the onus of authenticity lies with the institution and not on AICTE."*

### I. NAME OF THE INSTITUTION

<b>Name</b>	PSNA College of Engineering and Technology,	
<b>Address</b>	Permanent Location as approved by AICTE	Temporary Location (if applicable)
	Kothandaraman Nagar, Dindigul-624622, Tamil Nadu.	N.A.
<b>Phone Number</b>	0451 – 2554032, 2554349, 2554401 – 03	<b>E-Mail :</b> <a href="mailto:contact@psnacet.edu.in">contact@psnacet.edu.in</a> <a href="mailto:principal@psnacet.edu.in">principal@psnacet.edu.in</a>
<b>Fax</b>	0451 – 2554249	
<b>Web Site</b>	<a href="http://www.psnacet.edu.in">www.psnacet.edu.in</a>	
<b>Nearest Rly. Station</b>	Dindigul	<b>Distance : 10 Kms</b>
<b>Nearest Airport</b>	Madurai	<b>Distance : 60 Kms</b>

### II. NAME & ADDRESS OF THE PRINCIPAL

<b>Name</b>	Dr. D.Vasudevan				
<b>Designation</b>	Principal	<b>Qualification &amp; Experience</b>	<b>Highest Degree</b>	<b>Specialization</b>	<b>Total Experience</b>
			Ph.D.	Mechanical Engineering	19.11 years
<b>Phone. No.</b>	0451 – 2554262, Res. : 2433684		<b>Fax No.</b>	0451 – 2554249	
<b>E-Mail</b>	<a href="mailto:principal@psnacet.edu.in">principal@psnacet.edu.in</a>		<b>Mobile No. :</b> 94431 – 63842		

### III. NAME OF THE AFFILIATING UNIVERSITY

<b>Name</b>	Anna University, Trichirappalli		
<b>Address</b>	Bharathidasan Institute of Technology ( BIT ) Campus Trichirappalli.		
<b>Pin Code</b>	620 024	<b>Period of Affiliation</b>	2009-2010
<b>STD Code</b>	0431	<b>Phone No.</b>	2407947
<b>Fax</b>	2407333	<b>E-Mail / Web Site</b>	www.tau.edu.in

### IV. GOVERNANCE

#### **Governing Boards:**

For an effective and smooth functioning of all activities concerning academic, finance, infrastructure development etc., the college has a Governing Body, Governing Council and an Academic Advisory Body.

#### **Governing Body:**

The members of the Governing Body are the members of the Trust/Society.

Tmt. K. Dhanalakshmi, Chairperson

Thiru. R. S. K. Raguraam, Member

Thiru. R. S. K. Lakshmana Prabhu, Member

Thiru. R. S. K. Sukumaran, Member

Principal, Ex-officio Member

The Governing Body meets once in four months and reviews all academic, and other developmental activities.

### **Governing Council:**

The Governing Council is constituted as per the norms prescribed by AICTE.

The members of the Governing Council are as follows:-

1. Tmt. K. Dhanalakshmi, Chairperson, PSNACET - **Chairperson**
2. Thiru. R. S. K. Raguraam, Director, PSNACET - **Member**
3. Thiru. R. S. K. Laksshmana Prabhu, Director, PSNACET - **Member**
4. Thiru. R. S. K. Sukumaran, Director, PSNACET - **Member**
5. Thiru. K.Sivagnanam, Auditor, Chennai. - **Auditor Member**
6. Regional Officer, A.I.C.T.E., Southern  
Regional Office, Chennai. - **Member of AICTE**
7. Dr.B.Ilango, Former VC, Bharathiyar University,  
Coimbatore. - **Member (Education)**
8. Mr.Muthu, Formerly with DOTE ,Chennai. -**Member ( Education)**
9. Dr.P.Narayanasamy, Professor, Department of CSE,  
College of Engineering , Guindy, Anna University,  
Chennai. -**Member (Academic)**
10. Dr.K.Subramanian, Professor, Department of Civil  
Engineering, Coimbatore Institute of Technology,  
Coimbatore. -**Member (Academic)**
11. Dr.B.Shekar, Professor,IIM,Bangalore. -**Member (Academic)**
12. Dr. Ganesh Devaraj, Managing Director &  
Chief Executive officer, Soliton Technoligies, Bangalore. -**Member(Industry)**
13. Mr.Niranjankumar, Sr.Vice President,  
Keane International, India Limited, Chennai. -**Member(Industry)**
14. Mr.K.Chandra Sekaran, Additional General  
Manager, HRDC, BHEL, Tiruchirappalli, -**Member (Industry)**
15. Dr.D.Vasudevan , Principal, PSNA CET, Dindigul, -**Ex-OfficioMember**

The Governing Council meets twice in a year and reviews various activities of the college and suggests measures to achieve excellence in academic, Research & Development and improvements in infrastructural facilities.

**Academic Advisory Body:**

The academic advisory body of the college is constituted with the following members :

1. The Principal
2. Heads of all the Departments
3. Senior Faculty from all Departments.

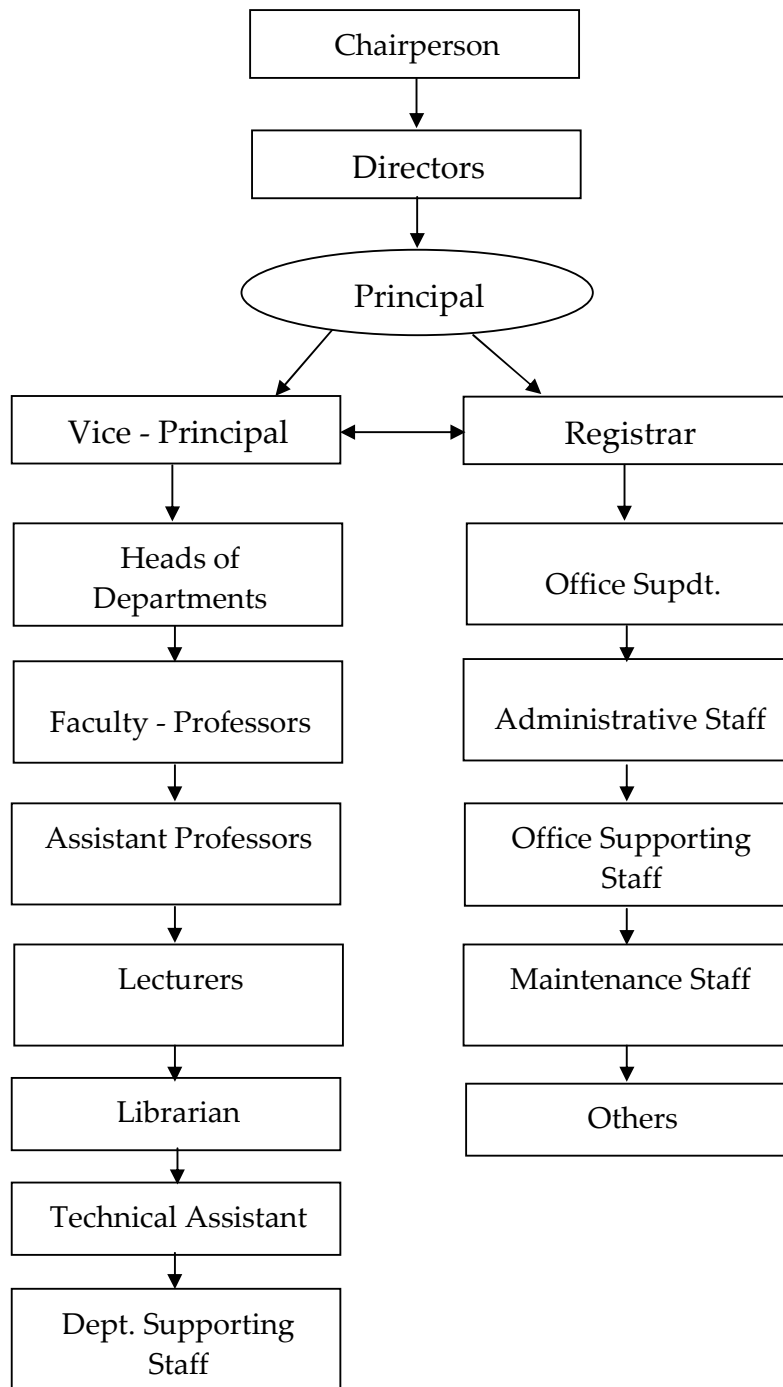
**v Frequency of the Board Meetings and Academic advisory body**

The academic advisory body meets once in a month and reviews the following academic matters:

1. Coverage of Syllabus
2. Content required beyond the syllabus
3. Performance of students in internal tests and University examination
4. Attendance and discipline of students
5. Scheduling of industrial visits and training
6. Career development programme

### ORGANIZATIONAL CHART AND PROCESSES:

The organizational chart for effective implementation of various activities in the college is depicted below:



Under the guidance of Chairperson, the Directors issue necessary guidelines to the Principal.

The Principal in consultation with the management, makes plans, organizes, controls and executes the task.

**General Administration:**

The Registrar looks after the administration of office and correspond with to AICTE, AU and other agencies in consultation with the Principal and co-ordinates in all activities of departments and office.

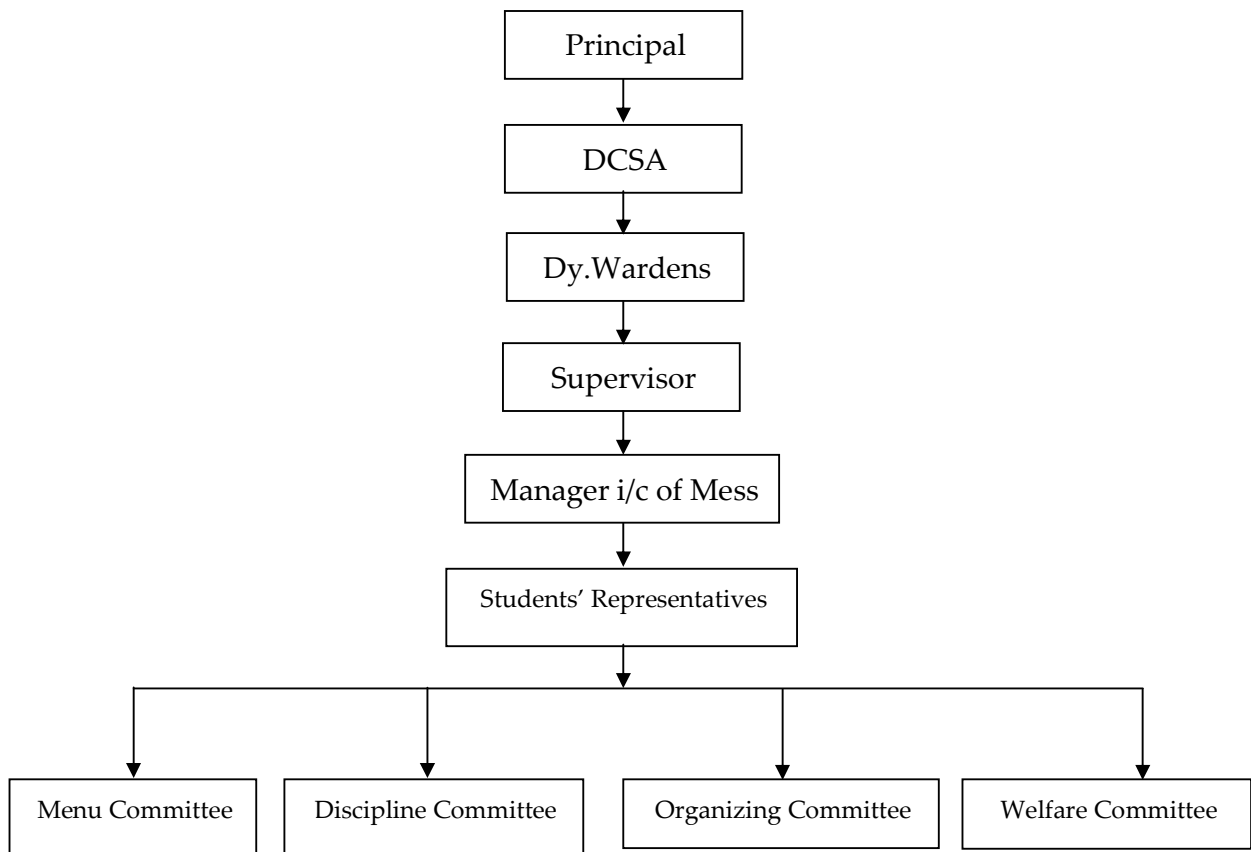
Office Superintendent renders necessary assistance to the Principal and Registrar in the day-to-day affairs.

Administrative staff carry out the task assigned to them and maintain records.

Supporting staff assist all officials.

Maintenance staff attend the day-to-day work assigned to them and maintain cleanliness.

**Hostel Administration:**



Under the guidance of the Principal, the Dy.Wardens provides accommodation to the students as per the rules prescribed. They maintain attendance of the students, render necessary assistance to them and help in maintaining discipline.

The Dy.Controller of Student affairs manages the purchase of all items for running the hostel and co-ordinates with the hostel supervisors and the Manager.

The supervisor oversees the cleanliness of the hostel campus. The Manager i/c of Hostel Mess makes arrangement to provide quality food on time to the students. The Supervisors and the Manager co-ordinate with all other functionaries in the hostel.

The DCSA, Dy.Wardens and the Supervisor brief the Principal periodically on all matters of importance.

The students' representative of various committees discuss with the Dy. Wardens and Principal on all issues concerning them in the hostel.

**Processes involved in maintaining high academic standards are detailed below.**

**Academic - Teaching-Learning Process:**

Heads of Departments in association with the faculty

Prepare the Academic Plan for a Semester.

Identify Theory & Practical subjects pertaining to the parent department and inter-departments.

Allocate subjects based on qualification, specialization, experience and previous results.

The faculty prepares Time-Table with reference to the Curriculum.

Prepare Lesson Plan effectively, well ahead of the commencement of a semester.

Handle lecture classes as per the time-table.

Conduct Internal Tests & Model Examination.

Evaluate the answer books and notify the marks.

Identify weak students and conduct special coaching classes.

Verify observation and Record Note Books.

Counsel the students and conduct re-test for those failed/performed poorly.

Inform the parents about the performance of their wards.

Conduct seminars

Motivate students to do Innovative Project

**Nature and extent of involvement of faculty and students in academic affairs and improvements:**

The Members of faculty in all departments are well qualified, experienced and dedicated towards the goal.

They discharge the duties with utmost sincerity and involve themselves in the curricular co-curricular activities in the best interest of the student.

Incentives and awards are instituted for achieving academic excellence by faculty and students.

Faculty members are deputed regularly for FDP, STTP, Summer/Winter Schools, Workshop and Conferences.

Academic Excellence : Students and Staff of PSNACET have excelled in academics consistently. The students have also obtained many University Ranks.

S.No.	Branch	Number of Ranks
1.	Civil	30
2.	Mechanical	20
3.	EEE	04
4.	ECE	22
5.	CSE	09
6.	IT	09
7.	MBA	25
8.	MCA	15
	M.Tech. (Remote Sensing)	1
<b>Total :</b>		<b>135</b>

In addition to the normal learning process, students get exposure to the practical world through industrial visits, guest lectures etc.

Current concepts and practices are introduced to students by way of value added courses.

Professional communication courses are conducted regularly to improve communication skills.

The college also conducts Business English Course in collaboration with British Council.

Regular courses on improving aptitude skills are conducted by experienced faculty.

For a group of 15-20 students, a faculty is allotted as their Proctor. Students are advised and assisted in solving their problems on both academic and non-academic. Proctor follows up the progress of the students, maintains students profile and guides them to make improvements in their performance.

**Curricular activities:**

Prepare detailed lesson plan and handle classes

Suggest various reference books

Conduct periodic tests and closely monitor the students' performance

Send progress reports to the parents

Identify weak students and give them special coaching

Arrange industrial visits

Counsel the students as and when required

Conduct career guidance/career development programmes

Conduct value added courses

Arrange guest lectures for teaching the contents beyond syllabus

### **Co-curricular activities:**

Encourage the students to participate in various National Level Competitions

Assist them in the preparation and presentation of Research Papers

Guide them in the National Level Symposiums organized

Motivate them to participate in social activities-NSS, YRC, Blood Donation Camps etc.

Encourage them in sports & games

### **Mechanism/Norms & Procedures for democratic/good governance:**

Academic calendar for the college and departments are prepared well in advance.

Rules and regulations of the college are framed and informed to all concerned.

Regulations of the University are informed to all students, faculty and staff.

Policy decisions related to all academic matters are taken collectively by the Academic Advisory Committee. Minutes of meetings are prepared and circulated to the members and the faculty. All decisions are communicated through Circulars to the faculty and through Notices to the students.

Meetings of faculty are convened at regular intervals and the policy decisions related to academic matters and others informed.

Proctor system is adopted to take special care on each student.

- § Every class has a class advisor in charge for attendance who will monitor the participation of students in regular classes and other programmes.
- § Internal Test Mark and attendance are sent to the parents periodically.
- § Weak students are identified and suitable action to improve their performance is taken periodically.
- § Misbehaved students are identified and counseled.
- § After the announcement of semester results coaching classes are conducted for the failed students.

**Students' feedback on institutional governance/faculty performance:**

Class Committee (consisting of students and the faculty handling the classes) Meetings are conducted thrice in a semester and feedback is obtained from students directly. Suggestions from students are listened to.

Feedback from students into faculty subject-wise. Strengths and weaknesses of faculty are identified and accordingly faculties are rewarded/counseled to improve upon.

Feedback is also obtained from students about institutional governance and suggestions are accepted and implemented.

**Grievance redressal mechanism for faculty, staff and students:**

A Grievance Redressal Committee comprising of senior faculty, students and staff is constituted every year.

The committee is headed by the Head of a department. It receives grievance from faculty, staff and students and take remedial actions.

On complaints, it conducts inquiry considering all aspects and submits its findings and recommendations. Remedial measures are taken accordingly.

Suggestion boxes are placed at strategic points and acted upon promptly.

## V. PROGRAMMES

Name of the Programmes approved by the AICTE

<b>Sl.No.</b>	<b>Under Graduate</b>
1.	B.E - Civil Engineering
2.	B.E - Mechanical Engineering
3.	B.E - Electronics and Communication Engineering
4.	B.E - Electrical and Electronics Engineering
5.	B.E - Computer Science and Engineering
6.	B.Tech. - Information Technology
7.	B.E – Bio-Medical Engineering
	<b>Post Graduate Programmes</b>
8.	MBA
9.	MCA
10.	M.E - Power Electronics & Drives
11.	M.E - Applied Electronics
12.	M.E - Computer Science and Engineering
13.	M.E - Computer and Communication
14.	M.E - VLSI Design
15.	M.Tech. – Remote Sensing

v Name of the Programmes accredited by the AICTE

Sl.No.	Under Graduate/ PG Courses	Status	Remarks
1	BE - Civil Engineering	5 Years	Accredited
2	BE - Mechanical Engineering	5 Years	Accredited
3	BE - Electronics and Communication Engineering	5 Years	Accredited
4	BE - Electrical and Electronics Engineering	5 Years	Accredited
5	BE - Computer Science and Engineering	5 Years	Accredited
6	B.Tech. - Information Technology	5 Years	Accredited
7	MBA	5 Years	Accredited
8	MCA	5 Years	Accredited

Sanctioned intake, duration, fee and cut-off marks for each programme.

S.No	Courses	No.of seats	Duration/ Years	Cut of Marks %	Fees Rs./ Annum	Placement Facilities
1	BE - Civil Engineering	60	4	50-85	45,000	Available
2	BE - Mechanical Engineering	120	4	55-88	45,000	Available
3	BE - Electronics and Communication Engineering	120	4	70-94	45,000	Available
4	BE - Electrical and Electronics Engineering	120	4	65-89	45,000	Available
5	BE - Computer Science and Engineering	120	4	70-95	45,000	Available
6	B.Tech. - Information Technology	120	4	70-92	45,000	Available
7	BE - Bio-Medical Engineering	60	4		40,000	Available
8	MBA	120	2	50-75	53,000	Available
9	MCA	120	3	50-78	53,000	Available
10	ME - Power Electronics & Drives	25	2	Above 60 %	53,000	Available
11	ME - Applied Electronics	25	2	Above 60 %	53,000	Available
12	ME - Computer Science and Engineering	25	2	Above 60 %	53,000	Available
13	ME - Computer and Communication	18	2	Above 60 %	53,000	Available
14	ME - VLSI Design	18	2	Above 60 %	53,000	Available
15	M.Tech. - Remote Sensing	18	2	Above 60 %	53,000	Available

**Campus placement in last three years with minimum salary, maximum salary and average salary**

Sl.No	Year	No. of Students Placed	Maximum Salary	Minimum Salary	Average Salary
1.	2008 - 2009	214	33,000	8,000	20,500
2.	2007 - 2008	428	33,300	15,000	24,150
3.	2006 - 2007	363	25,000	6,000	15,500
Total No. of Students Placed: <b>1005</b>					

**Placement Facilities:**

A placement cell with a full time placement officer, supporting staff and other infrastructure such as conference hall, GD rooms, personal interview rooms with a full fledged office is functioning in the campus. Facilities are also available for conducting on-line aptitude test and technical tests.

**The placement cell focuses on:**

- i). Conducting career guidance for students.
- ii). Maintains constant liaison with industries for in-plant training, industry visits and campus placement.
- iii). Conducting career development programmes, aptitudes tests, technical tests mock interviews, group discussion, communication skills etc., regularly.
- v) Name and duration of programme(s) having affiliation/collaboration with Foreign University(s)/Institution(s) and being run in the same Campus along with status of their AICTE approval. If there is foreign collaboration, give the following details:

- Nil -

Details of the Foreign Institution/University:

**Not Applicable**

- Name of the University/Institution
- Address
- Website
- Is the Institution/University Accredited in its Home Country
- Ranking of the Institution/University in the Home Country
- Whether the degree offered is equivalent to an Indian Degree? If yes, the name of the agency which has approved equivalence. If no, implications for students in terms of pursuit of higher studies in India and abroad and job both within and outside the country.
- Nature of Collaboration
- Conditions of Collaboration
- Complete details of payment a student has to make to get the full benefit of collaboration.

v For each Collaborative/affiliated Programme give the following:

**Not Applicable**

- Programme Focus
- Number of seats
- Admission Procedure
- Fee
- Placement Facility
- Placement Records for last three years with minimum salary, maximum salary and average salary

v Whether the Collaborative Programme is approved by AICTE? If not whether the Domestic/Foreign Institution has applied to AICTE for approval as required under notification no. 37-3/Legal/2005 dated 16<sup>th</sup> May, 2005

**Not Applicable**

#### VI. FACULTY

**Permanent Faculty** : 231

**Visiting Faculty** : 25

**Adjunct Faculty** -  $\longrightarrow$  **Annexure - II**

**Guest Faculty** : 25


**Permanent Faculty - Student Ratio** :  $3068/231= 1:13.28$


Faculty profile and Name list <http://www.psnacet.edu.in/fac.php>

**VII. PROFILE OF PRINCIPAL WITH QUALIFICATIONS, TOTAL EXPERIENCE, AGE AND DURATION OF EMPLOYMENT AT THE INSTITUTE CONCERNED**

Name	Qualification	Total Experience (Yrs)	Age (Yrs)	Date of Joining
Dr.Vasudevan	Ph.D	19.11 years	44	28/08/1989

**FACULTY PROFILE**

<b>Name</b> : Dr.D.Vasudevan			
<b>Date of Birth</b> : 04/01/1965			
<b>Designation</b> : Principal & HOD			
<b>Date of Joining</b> : 28/08/1989			
<b>Qualifications</b> : M.E., Ph.D			
Degree	University/College	Year	Specialization
Ph.D	Coimbatore institute of Technology, Coimbatore, Bharathiayar University	2006	MECHANICAL ENGINEERING
M.E	MK University / Thiagarajar College of Engineering, Madurai	1998	Industrial Engineering
B.E	Karnatak University/ STJ Institute of Technology, Ranebennur	1986	Mechanical Engineering
<b>Work Experience : As on 31-07-2009</b>			
<b>Total Experience</b> <b>Years : 19</b> <b>Months : 11</b>			
<b>Teaching:</b> 19 years 11 months <b>Industry:</b> <b>Research:</b> 1year 6 months <b>Other:</b>			
Teaching/Industry/ Research	Designation	Period	
		From	To
PSNA College of Engg. & Tech., Dindigul.	Principal	01.06.2009	Till Date
PSNA College of Engg. & Tech., Dindigul.	Professor	16.04.2006	30.05.2009
PSNA College of Engg. & Tech., Dindigul.	Assistant Professor	26.06.2004	15.04.2006
PSNA College of Engg. & Tech., Dindigul.	Senior Lecturer	25.06.2003	25.06.2004
PSNA College of Engg. & Tech., Dindigul.	Lecturer	28.08.1989	24.06.2003
<b>Area of Interest</b>	Bio – Diesel, Application of ANN in Mechanical Engineering.		
<b>Research Guidance/Papers Published</b>			
<b>Research guidance at Ph.D. Level</b> : 01	<b>No. of papers published in</b> <b>National Journals</b> : 02 <b>International Journal</b> : 02		

<b>Projects Carried out</b>	<b>Conferences</b> : 08
<b>UG Level</b> : 35	<b>Book</b> : Nil
<b>PG Level</b> : Nil	<b>Monographs</b> : Nil
 <b>Signature</b>	

## VIII. Fee

### Details of fee, as approved by State Fee Committee, for the Institution

Sl.No	Category	CET Quota		Management Quota	
		Fixed by the State fee committee	Being charged by the Institution	Fixed by the State fee committee	Fixed by the State fee Institution
1.	Admission	-	-	-	-
2.	Tuition Fee	45000 / BME 40000*	45000 / BME 40000*	67500	67500
3.	University Fee(Examination fee etc)	-	-	-	-
4.	Hostel fee	-	38000	-	38000
5.	Laboratory fee	-	-	-	-
6.	Library fee	-	-	-	-
7.	Any other	-	-	-	-
<b>Total</b>		45000 / BME 40000	83000 / BME 78000	67500	105500

\* BME - Bio Medical Engineering Fee

- ∨ Time schedule for payment of fee for the entire programme.  
One month after the reopening of the college in each year of the programme.
- ∨ No. of Fee waivers granted with amount and name of students.  
- Nil
- ∨ Number of scholarship offered by the institute, duration and amount  
- Nil
- ∨ Criteria for fee waivers/scholarship. - Nil
- ∨ **Estimated cost of Boarding and Lodging in Hostels**

Particulars	Ladies Hostel	Gents Hostel
Admission Fee	1000	1000
Room Rent & Establishment charges	21000	21000
Mess Charges – Advance	16000	16000
<b>Total</b>	<b>38000</b>	<b>38000</b>

## **Ix. ADMISSION**

- v Number of seats sanctioned with the year of approval for the academic year 2007-2008.

Sl.No	Courses	No.of seats	Year of approval
1	BE - Civil Engineering	60	1993
2	BE - Mechanical Engineering	120	2004
3	BE - Electronics and Communication Engineering	120	2004
4	BE - Electrical and Electronics Engineering	120	2004
5	BE - Computer Science and Engineering	120	2005
6	BTech - Information Technology	120	2005
7	BE – Bio-Medical Engineering	60	2005
8	MBA	120	2006
9	MCA	120	2006
10	ME - Power Electronics & Drives	25	2003
11	ME - Applied Electronics	25	2003
12	ME - Computer Science and Engineering	25	2003
13	ME - Computer and Communication	18	2004
14	ME - VLSI Design	18	2005
15	MTech – Remote Sensing	18	2005

Number of students admitted under various categories each year in the last three years.

### **2005-2006**

50% of seats filled through single window system by Ann University.

50% of seats filled through CET conducted by consortium of self financing Professional Arts and Science Colleges Tamil Nadu.

### **2006 –2007, 2008-2009**

65% of seats filled through single window system by Anna University.

35% of seats filled through CET conducted by consortium of self financing Professional, Arts and Science Colleges Tamil Nadu.

- v Number of applications received during last two years for admission under Management Quota and number admitted.

Year	UG		PG	
	Applied	Admitted	Applied	Admitted
2005-2006	928	338	256	240
2006-2007	1356	720	401	332
2007-2008	2000	720	500	350
2008-2009	1010	720	500	350
2009-2010	1210	720	700	350

#### X. ADMISSION PROCEDURE

- v **Mention the admission test being followed, name and address of the Test Agency and its URL (website).**

Government Quota Seats URL – [www.annauniv.edu](http://www.annauniv.edu)

Consortium of Self – Financing Professional, Arts and Science Colleges in Tamil Nadu.

No.29, Old No.12, Ganapathy Street, Royapettah, Chennai – 600 014.

URL – [www.tnsfconsortium.org](http://www.tnsfconsortium.org)

Number of seats allotted to different Test Qualified candidates separately [AIMCET/CET (State conducted test/University tests)/Association conducted test]

65 % of seats filled through single window system by Anna university.

35 % of seats filled through CET conducted by consortium of self financing Professional Arts and Science Colleges Tamil Nadu.

- v Calendar for admission against management/vacant seats:

⇒ Last date for request for applications.

Second week of July

⇒ Last date for submission of application.

Fourth week of July

⇒ Dates for announcing final results.

As decided by Anna University and Consortium of Self Financing Professional, Arts and Science Colleges in Tamil Nadu.

⇒ Release of admission list (main list and waiting list should be announced on the same day)

As decided by Anna University and Consortium of Self Financing Professional, Arts and Science Colleges, Tamil Nadu.

⇒ Date for acceptance by the candidate (time given should in no case be less than 15 days)

As decided by Anna University and Consortium of Self Financing Professional, Arts and Science Colleges in Tamil Nadu.

⇒ Last date for closing of admission.

As decided by State Government and Anna University

⇒ Starting of the Academic session.

As prescribed by Anna University

### **I Year**

Commencing Date – August / September

Last Working Date – April

⇒ The waiting list should be activated only on the expiry of date of main list.

List is maintained by Anna University and Consortium of Self Financing Professional, Arts and Science Colleges in Tamil Nadu.

⇒ The policy of refund of the fee, in case of withdrawal, should be clearly notified.

As per the State Government norms

### **XI. CRITERIA AND WEIGHTAGES FOR ADMISSION**

∇ Describe each criteria with its respective weightages i.e. Admission Test, marks in qualifying examination etc.

As fixed by Anna University and Consortium of self financing professional, Arts and & Science College, Tamil Nadu.

∇ Mention the minimum level of acceptance, if any.

As fixed by Anna University and Consortium of self financing professional, Arts and & Science College, Tamil Nadu.

∇ Mention the cut-off levels of percentage & percentile scores of the candidates in the admission test for the last three years.

As fixed by Anna University and Consortium of self financing professional, Arts and & Science College, Tamil Nadu.

∇ Display marks scored in Test etc. and in aggregate for all candidates who were admitted.

As fixed by Anna University and Consortium of self financing professional, Arts and & Science College, Tamil Nadu.

**Will be displayed during admission process**

**Item No I - XI must be given in information brochure and must be hosted as fixed content in the website of the Institution.**

**The Website must be dynamically updated with regard to XII–XV.**

**XII. APPLICATION FORM**

- ∇ Downloadable application form, with online submission possibilities: Yes  
<http://www.psnacet.edu.in/applis.php>

**XIII. LIST OF APPLICANTS**

- ∇ List of candidates whose applications have been received along with percentile/percentage score for each of the qualifying examination in separate categories for open seats. List of candidates who have applied along with percentage and percentile score for Management quota seats.

List is prepared by Anna University and Consortium of Self Financing Professional, Arts and Science Colleges in Tamil Nadu during the admission process and displayed in the website. ([www.annauniv.edu](http://www.annauniv.edu), [www.tnsfconsortium.org](http://www.tnsfconsortium.org))

**XIV. RESULTS OF ADMISSION UNDER MANAGEMENT SEATS/VACANT SEATS**

- ∇ Composition of selection team for admission under Management Quota with the brief profiles of members (This information be made available in the public domain after the admission process is over)

**Not Applicable.**

- ∇ Score of the individual candidates admitted arranged in order of merit.  
Will be displayed.
- ∇ List of candidates who have been offered admission.

**List is Maintained by Anna University and Consortium of Self Financing Arts and Science Colleges in Tamil Nadu.**

- ∇ Waiting list of the candidates in order of merit to be operative from the last date of joining of the first list candidates.

Waiting list is released on merit basis.

- ∇ List of the candidates who joined within the date, vacancy position in each category before operation of waiting list.

Guidelines given by Anna University is followed.

**XV. INFORMATION ON INFRASTRUCTURE AND OTHER RESOURCES AVAILABLE**

**LIBRARY:**

Number of Library books/Titles/Journals available (programme-wise)

List of online National/International Journals subscribed.

E-Library facilities.

S.No	Department	No.of Titles	No. of Volumes
1.	B.E. Civil Engineering	2841	5162
2.	B.E. Mechanical Engineering	3967	7594
3.	B.E. Electrical & Electronics Engineering	2180	4168
4.	B.E. Electronics & Communication Engineering	3165	5904
5.	B.E.Computer Science Engineering	3153	4829
6.	B.E. Biomedical Engineering	808	1085
7.	B.Tech - Information Technology	2224	3612
8.	B.Tech - Biotechnology	120	157
9.	Mathematics	1891	2927
10.	Physics	671	972
11.	Chemistry	680	943
12.	English	898	1476
13.	General	3308	4009
14.	Master of Business Administration	6847	9767
15.	Master of Computer Applications	2347	4867
16.	M.E. Applied Electronics	471	677
17.	M.E. Computer Science	729	1182
18.	M.E.Power Electronics & Drives	359	644
19.	M.E. Computer & Communication	762	1170
20.	M.E. VLSI Design	241	379
21.	M.Tech - Remote Sensing	251	374
<b>Total</b>		<b>37913</b>	<b>61898</b>

**Journals & Magazines**

S.No	Departments	National		International			
		Journals	Magazines	Journals	Magazines	E-Journals	E-Magazines
1.	Civil	13	10	13	10	40	10
2.	Mechanical	7	15	43	14	43	13
3.	Electrical	6	8	45	23	45	23
4.	Electronics	7	7	46	28	46	27
5.	CSE, IT & MCA	8	8	32	30	32	23
6.	Biomedical	10	7	27	11	27	11
7.	Mathematics	2	0	0	0	0	0

S.No	Departments	National		International			
		Journals	Magazines	Journals	Magazines	E-Journals	E-Magazines
	Physics	6	1	14	3	13	3
	Chemistry	4	0	0	0	0	0
	General	8	16	3	3	3	1
8.	Management Studies	26	14	25	14	23	8
	<b>Total</b>	<b>97</b>	<b>86</b>	<b>248</b>	<b>136</b>	<b>272</b>	<b>119</b>