



7.1.3 Facilities in the Institution for the management of degradable and non-degradable waste

INDEX

S.No.	Description	Page No.
1	Degradable and Non-Degradable Waste Bins	1
2	Garbage Collection Vehicle	3
3	Biogas Plant	5
4	Food Waste	6
5	Display regarding Food Waste and Water Conservation	7
6	Sanitary Napkin Incinerator	9
7	Agricultural Waste	10
8	Segregation of Non-degradable wastes	11
9	Sewage Treatment Plant	13
10	E-Waste Management	15
11	E-Wastes	16
12	Certificate for Eat Right CAMPUS – Awarded by <i>fssai</i>	17

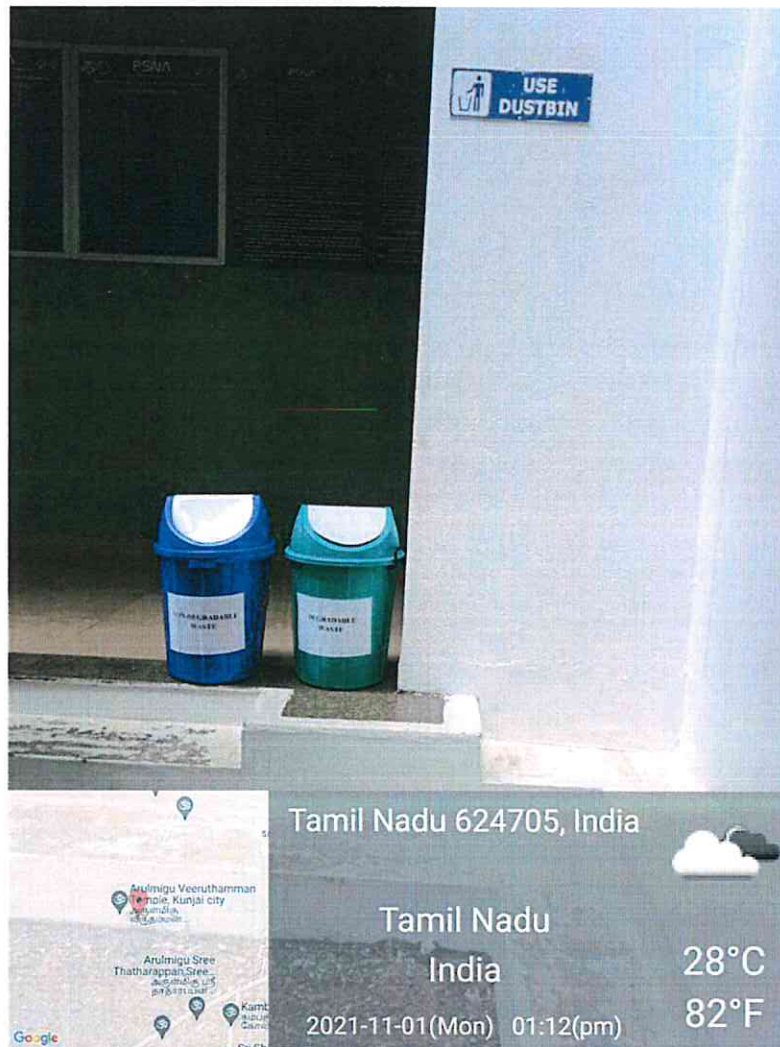




PSNA

College of Engineering & Technology

Degradable and Non-Degradable Waste Bins



- Sufficient numbers of waste bins are available in the campus for the students to dispose degradable and non-degradable wastes.
- Bio-degradable wastes include food wastes, canteen waste, human waste, paper waste and etc.
- Non-biodegradable wastes include plastic, tins, metals, glass bottles and etc.

PSNACET, DINDIGUL



Principal
PRINCIPAL
P.S.N.A College of Engg & Tech
Dindigul - 624 622.



Degradable and Non-Degradable Waste Bins



- Bio-degradable and Non-biodegradable wastes are put in proper waste bins located in every class room, laboratories, canteen, kitchen, washrooms and corridors.



NRK
PRINCIPAL
P.S.N.A College of Engg & Tech
Dindigul - 624 622.



PSNA

College of Engineering & Technology

Garbage Collection Vehicle

- The wastes collected from waste bins are regularly shifted to collecting trolleys by Housekeeping staff members.
- They are then dumped in the specified place located away from the academic area and processed accordingly.



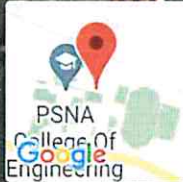
Handwritten signature
PRINCIPAL
P.S.N.A College of Engg & Tech
Dindigul - 624 622.



PSNA

College of Engineering & Technology

Garbage Collection Vehicle



Silvarpatti, Tamil Nadu, India
PSNA CSE Block, NH209, Silvarpatti, Tamil Nadu 624709, India
Lat 10.416484°
Long 77.901431°
14/09/21 03:42 PM



NPL
PRINCIPAL
P.S.N.A College of Engg & Tech
Dindigul - 624 622.



PSNA

College of Engineering & Technology

Biogas plant



- Biogas plant (7.5 kg/day of LPG per 100 kg of waste) is available where biogas is produced by fermenting biomass.
- Organic input materials, manure and dung are fed into the biogas plant.
- They are converted into biofertiliser and spread onto fields.
- Bio gas obtained from the plant is used for cooking.



NEWS
PRINCIPAL
P.S.N.A College of Engg & Tech
Dindigul - 624 622.



PSNA

College of Engineering & Technology

Food Waste



- Food wastes collected from hostels, guest houses and canteen are given to pigs and poultry farm located near Oddanchathram.
- Bio-degradable wastes are effectively converted to fertilizer by composting technology inside the campus.



NR
PRINCIPAL
P.S.N.A College of Engg & Tech
Dindigul - 624 622.



Display regarding Food Waste and Water Conservation

- To realize an environment with zero food-waste, several quotations, news paper articles and awareness statements are displayed in notice boards through which students and employees are inspired to reduce food/water loss and waste.
- To inculcate the students and employees with the practice of using water efficiently and cutting down its wastage or unnecessary usage, awareness signboards are kept at various places of the campus.



NRH



PSNA

College of Engineering & Technology

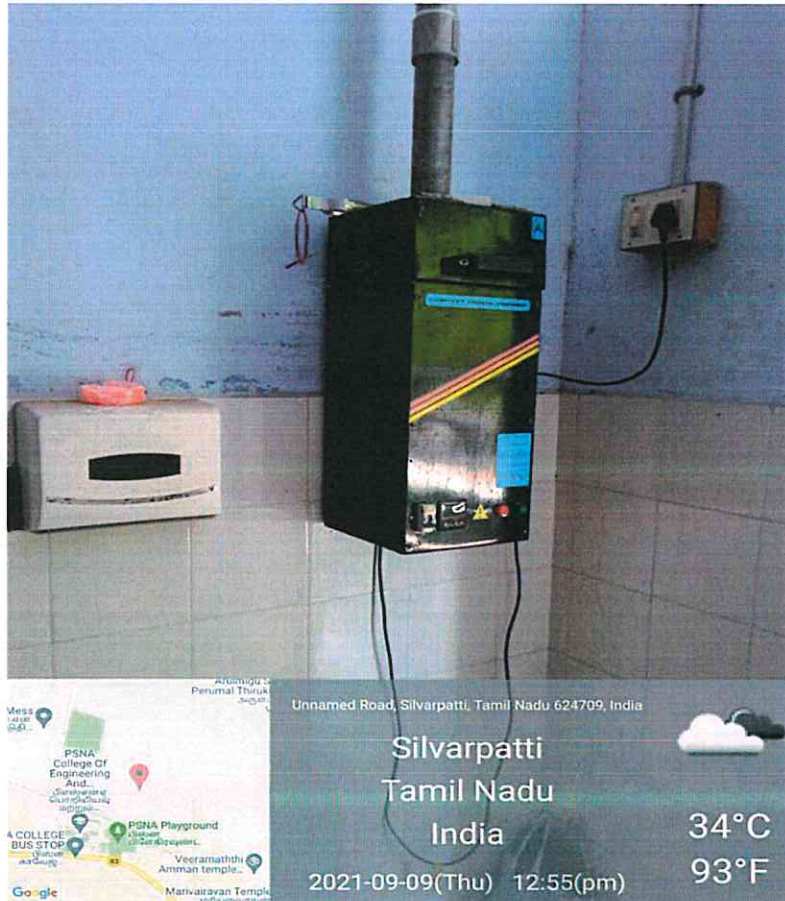
Display regarding Food Waste and Water Conservation



NRH
PRINCIPAL
P.S.N.A College of Engg & Tech
Dindigul - 624 622.



Sanitary Napkin Incinerator



- In-house disposal facility of sanitary napkins
- Incineration is used by the institute to dispose of the solid waste.
- Sanitary Napkin Incinerators are installed inside the campus to promote hygiene.



Netha
PRINCIPAL
P.S.N.A College of Engg & Tech
Dindigul - 624 622.



PSNA

College of Engineering & Technology

Agricultural waste



- It includes bio-degradable wastes such as dry leaves, grass cuttings, twigs, hay and straw.
- They are used in composting process for making some organic fertilizer.



PSNACET, DINDIGUL

PRINCIPAL
P.S.N.A College of Engg & Tech
Dindigul - 624 622.

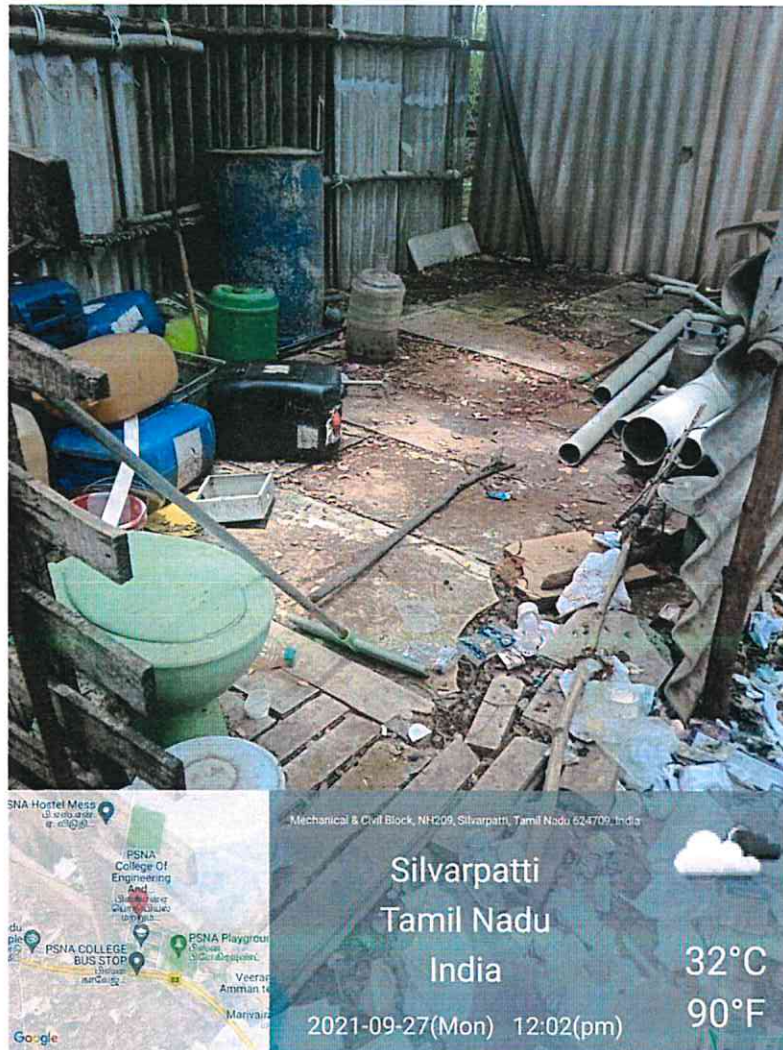


PSNA

College of Engineering & Technology

Segregation of Non-degradable wastes

- Wastes are dumped in the specified place located away from the Academic area.
- Non-degradable wastes are segregated and kept separately.



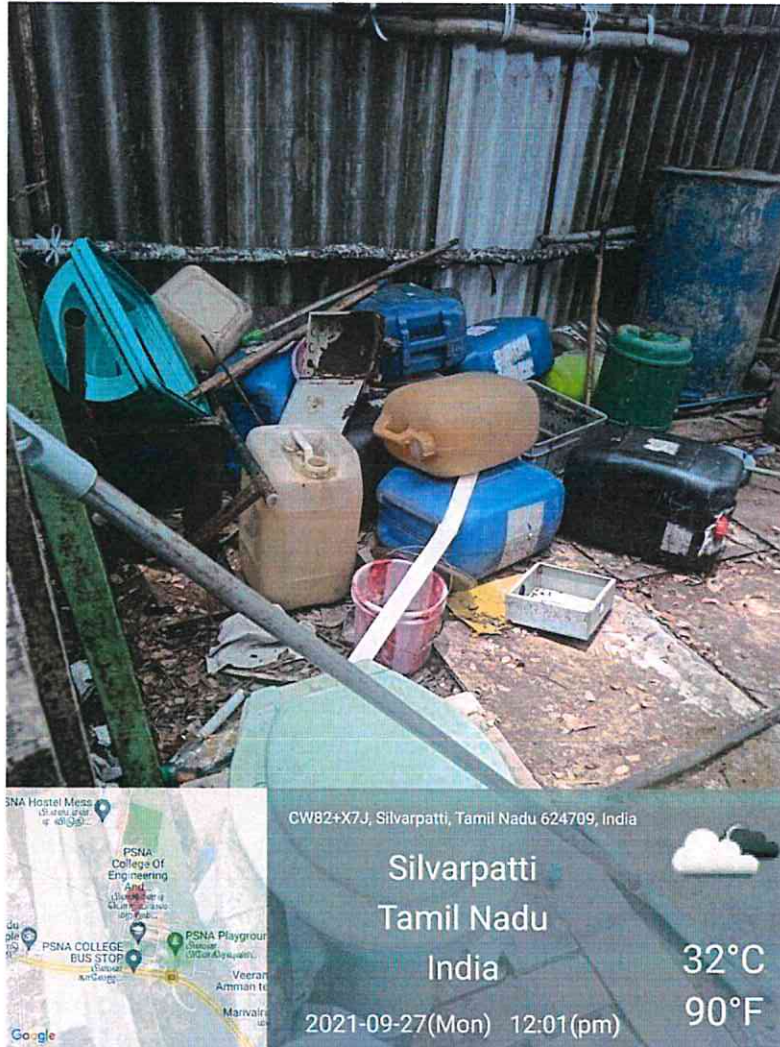
N&S
PRINCIPAL
P.S.N.A College of Engg & Tech
Dindigul - 624 622.



PSNA

College of Engineering & Technology

Segregation of Non-degradable wastes



[Signature]
PRINCIPAL
P.S.N.A College of Enng & Tech
Dindigul - 624 622.



Sewage Treatment Plant

- There are 3 Sewage Treatment Plants (STP) in the campus, located in old gents hostel (additionally processes liquid waste of institution), new gents hostel and ladies hostel.
- The entire treated water is used for watering the gardens and lawns maintained in the campus.
- The sludge settled in Sewage Treatment Plant is removed and dried on drying beds and used as manure for the gardens.

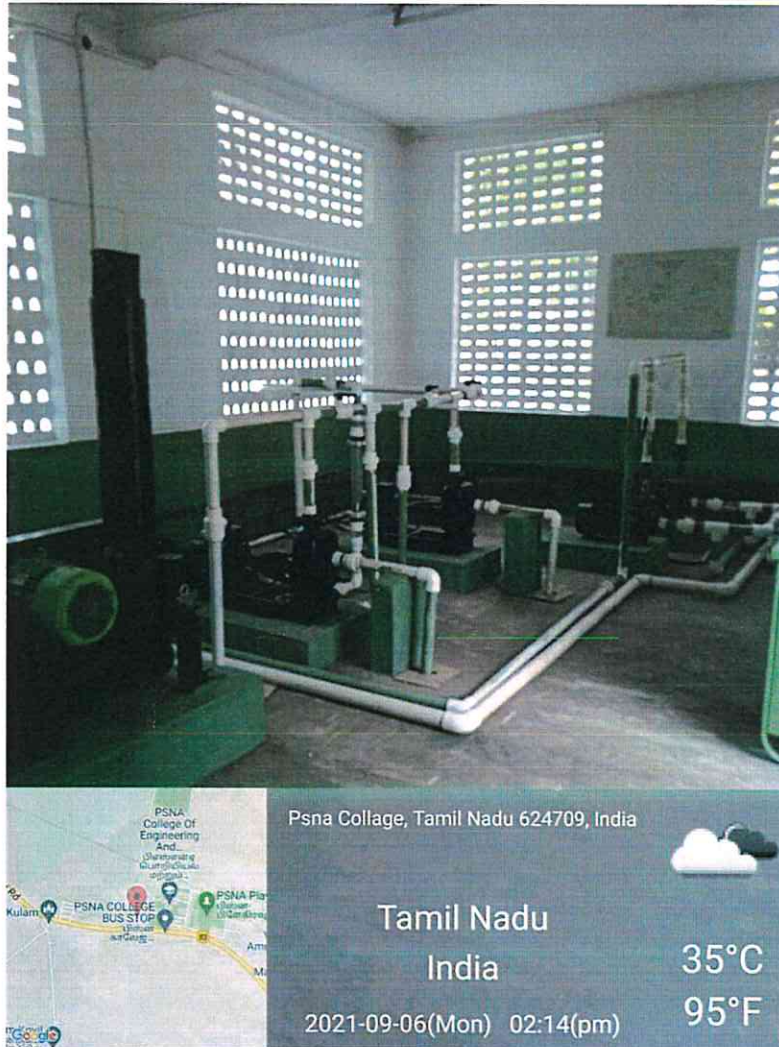




PSNA

College of Engineering & Technology

Sewage Treatment Plant



PRINCIPAL
P.S.N.A College of Engg & Tech
Dindigul - 624 622.



E-Waste Management

- Electronic goods are put to optimum use by repair work done by technical assistant.
- Non repairable e-waste like obsolete electronic devices such as computer systems, servers, monitors, compact discs, printers, scanners, calculators, fax machine, battery cells are used as models to explain concepts to the students.
- Otherwise, safely stored in a room and sold as a scrap for every academic year.
- Students are encouraged to reuse E-waste for project.
- Data are stored in cloud, to avoid the usage of CD-ROMs and pen drives.





PSNA

College of Engineering & Technology

E-Wastes



Silvarpatti, Tamil Nadu, India

Silvarpatti

Tamil Nadu

India

2021-09-27(Mon) 12:24(pm)

32°C

90°F



Unnamed Road, Silvarpatti, Tamil Nadu 624709, India

Silvarpatti

Tamil Nadu

India

2021-09-27(Mon) 12:17(pm)

32°C

90°F

PSNACET, DINDIGUL



PRINCIPAL
P.S.N.A College of Engg & Tech
Dindigul - 624 622.



PSNA

College of Engineering & Technology

Certificate for Eat Right CAMPUS –Awarded by *fssai*



**PSNA COLLEGE OF ENGINEERING &
TECHNOLOGY, Dindigul**

is certified as



as per guidelines established by
Food Safety and Standards Authority of India



Excellent

[Signature]
Shri Arun Singhal
Chief Executive Officer
FSSAI

Auditing Partner
FSATO INSPECTION SERVICES

Inspected By
PAKIESHAN

Implementation District
**TAMIL NADU FOOD SAFETY
DEPARTMENT, DINDIGUL
DISTRICT**

Valid up to **03 November 2023**



[Signature]
PRINCIPAL
P.S.N.A College of Engg & Tech
Dindigul - 624 622.